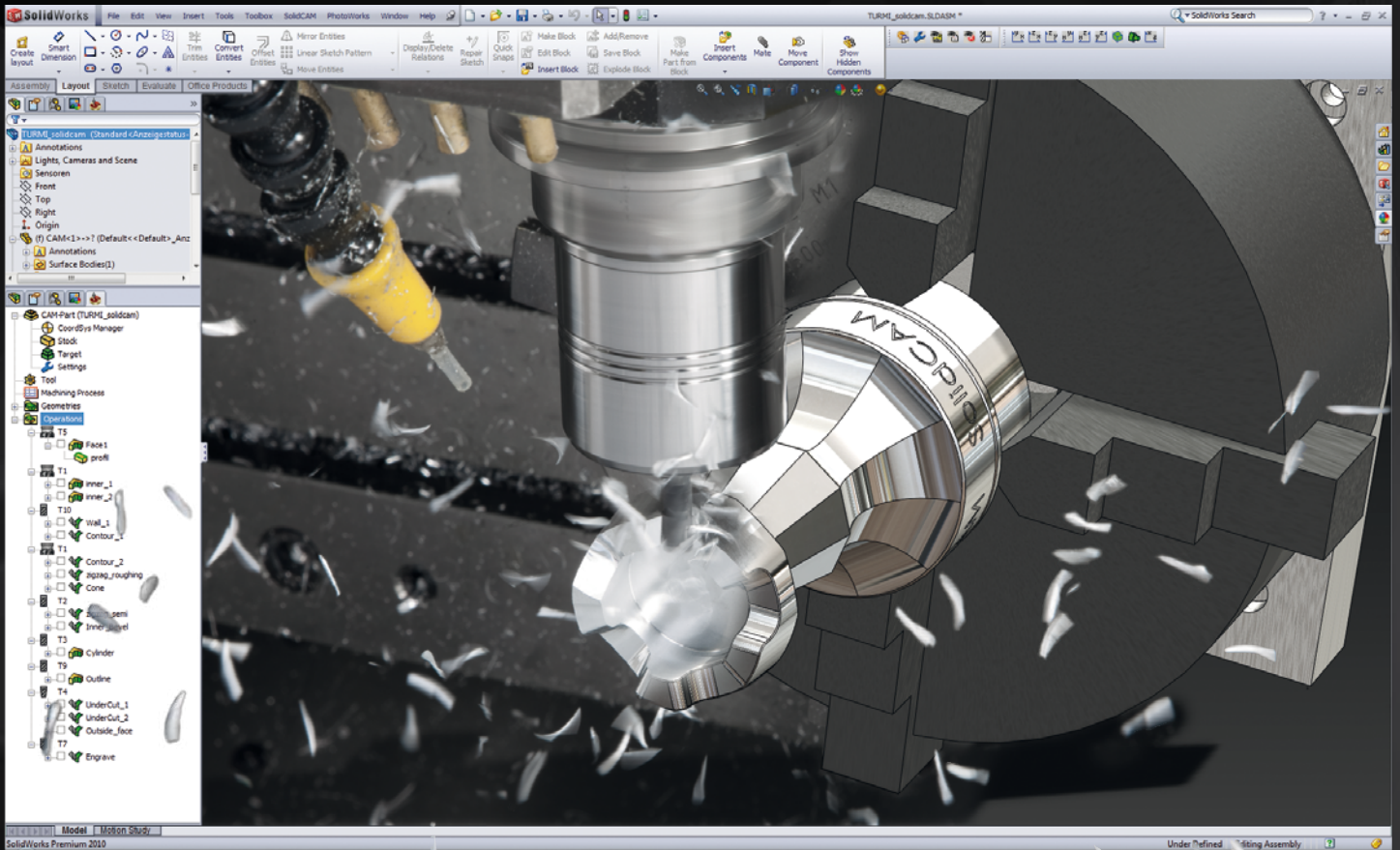




SOLIDCAM - THE LEADERS IN INTEGRATED CAM

The complete integrated Manufacturing Solution inside SolidWorks



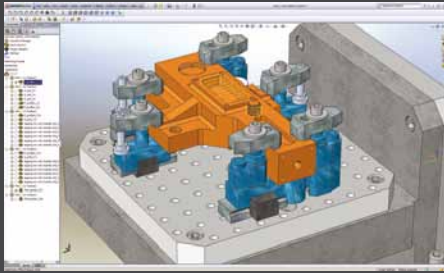
SEAMLESS SINGLE WINDOW INTEGRATION ...

- Unleash the hidden power and potential of your SolidWorks for direct programming of all your existing or future Milling, Turning, Mill-Turn and Wire EDM CNC machines.
- Benefit from SolidCAM's single-window integration with SolidWorks and the full associativity of the CAM toolpath to the SolidWorks design model.
- Flatten the learning curve of training and implementation time with the powerful SolidWorks CAM solution that has the familiar look, feel and function of SolidWorks.

AND FULL ASSOCIATIVITY TO SOLIDWORKS

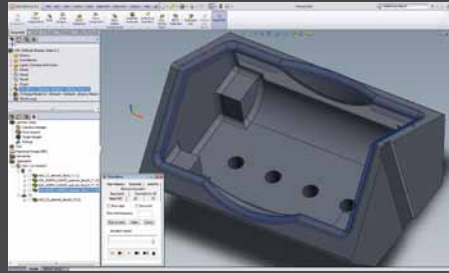
- Trust the one proven solution from the innovators of SolidWorks' integrated CAM, with over 10 years of integration experience.
- Eliminate design change delays by extending Parametric modeling all the way through to your production - Design changes flow right to your machines.
- Dominate your competitors by breaking through the wall between your design and production, for the fastest way from design to prototype and production.





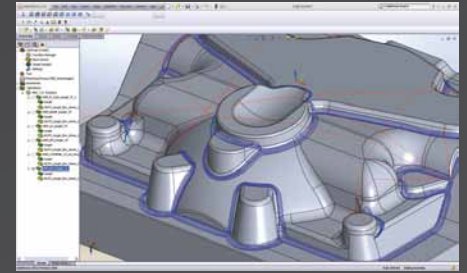
2.5D Milling

- The most straightforward, SolidWorks-style interface, combined with the latest technology for the fastest, most powerful and easiest to create 2.5D toolpaths.
- Designed for the advanced user and the novice. Full "Pilot Controls" provide unmatched power, "Auto-Pilot" feature recognition automates programming and gets you off the ground as quickly as possible.



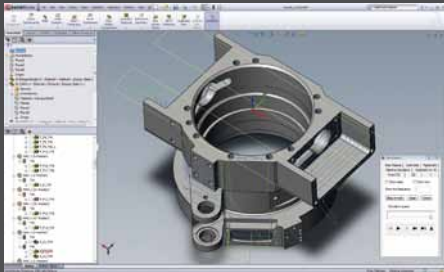
High-Speed Surface Machining (HSS)

- The distinctive CAM module that take your 2.5D machining way beyond profiles, pockets and faces
- Enhance your 3D machining capability by driving along specific surfaces on prismatic and 3D parts
- Total tool control to attack specific areas without the need for constraint boundaries or the time-consuming design of construction geometries.



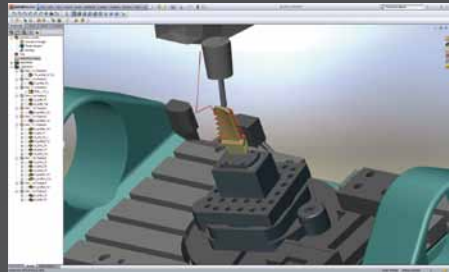
High-Speed Machining (HSM)

- Experience 3D machining taken to an entirely new level of smoothness, efficiency and smart machining.
- Speeds up slower machine tools and unleashes the speed of faster machines by eliminating inefficient, unnecessary moves and air cutting.
- The fastest and easiest way to generate the most advanced and best quality 3D toolpaths.



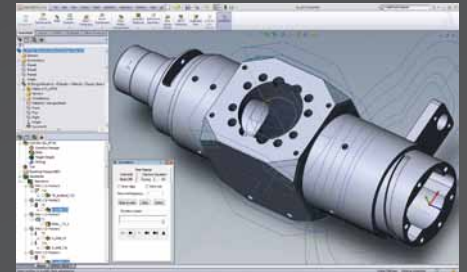
Indexed Multi-sided Machining

- Experience single machine home position with One-click orientations for indexed setups.
- Speed up multi-sided machining by eliminating multiple coordinate system constructions.
- Eliminate manual G-code editing or setting up multiple work offsets at the machine.



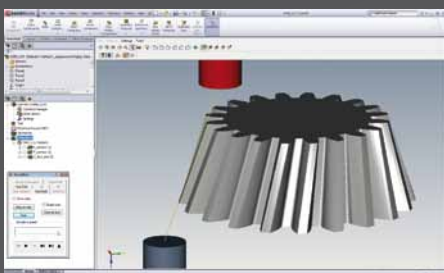
Simultaneous 5-axis Machining

- Trust in the most tested and proven 5-axis toolpaths in the industry with the most advanced control over all aspects of toolpath and collision checking.
- Pre-programmed, 5-axis strategies get you up and cutting instantly.
- Instant feedback with real time, life-like simulations complete with Cutter and Tool holder gouge checking.



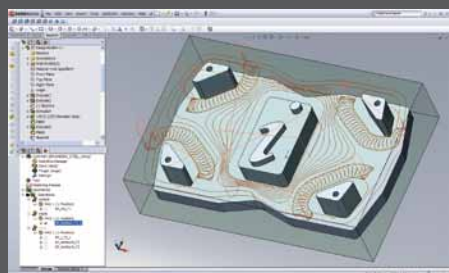
Turning and Mill-Turn up to 5 axis

- Supports all the latest multi-function CNC machines for combined milling and turning.
- Complete multi-axis and back-spindle programming with full simulation, seamlessly integrated into one extremely powerful package.
- Intelligent management of rest material between Milling and Turning operations limits air cuts for the most efficient toolpaths and reduced cycle times.



Wire EDM

- Supports 2-axis and 4-axis Wire-EDM.
- Handles profiles and tapers with constant and variable angles.
- Full user control of stop points and wire cutting conditions.



iMachining

- The first real breakthrough in Tool path technology to cut 2 to 3 times faster and deeper by optimizing tool engagement and speed through the entire tool path.
- iMachining adjusts toolpaths automatically for material, geometry, cutter and machine tool capability.
- Use your existing equipment to run faster and deeper with even the smallest tools in the hardest materials.



Service and Support

- The most experienced, knowledgeable support team in the business with extensive machining experience.
- Dedicated Post processor team to ensure compatibility with your Machine Tools.
- Powerful SolidCAM Professor video tutorials cover all features and use of SolidCAM.

